



****AVAILABLE IMMEDIATELY****

****UNFURNISHED** **FIRST FLOOR FLAT****

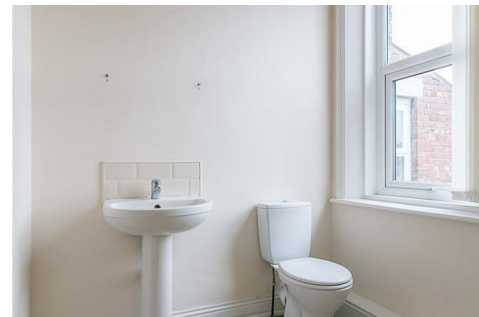
A smart and stylish first floor flat found in central Gosforth, Ashfield Road. Walking distance to a choice of local conveniences and transport links, this attractively priced property is ideal for professionals and is not to be missed!

The property briefly comprises; an entrance hall with stairs to the first floor landing; two double bedrooms; spacious lounge with feature fireplace and wood flooring; modern fitted kitchen with appliances; shower room WC with separate store room/ utility area. Externally there is a private yard to the rear with on street parking to the front. Very well presented throughout with gas central heating, double glazing, this fantastic property simply demands an early internal inspection.

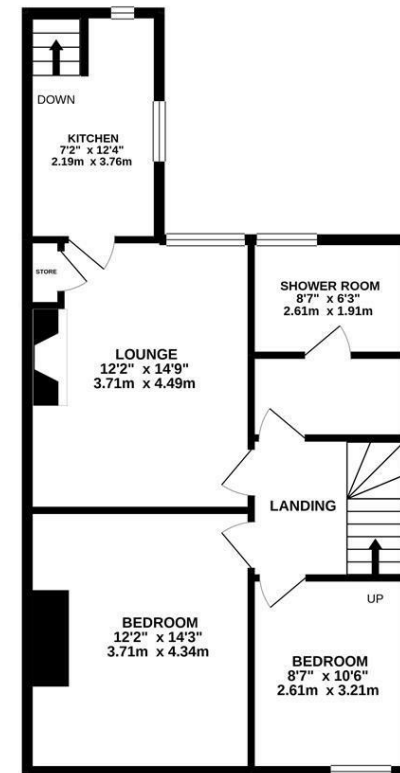
Available Immediately | £850pcm | Unfurnished | First Floor Flat | 710 Sq ft (65.9 m2) | Lounge | Two Double Bedrooms | Modern Kitchen | Shower Room WC | Utility/ Store Area | Great Central Gosforth Location | Private Rear Yard | On Street Parking | Close To Transport Links | GCH & DG | Council Tax Band: A | EPC Rating: D



GROUND FLOOR
45 sq.ft. (3.9 sq.m.) approx.



FIRST FLOOR
669 sq.ft. (62.3 sq.m.) approx.



TOTAL FLOOR AREA: 710 sq.ft. (65.9 sq.m.) approx.

Whilst every attempt has been made to ensure the accuracy of the floorplan contained herein, measurements of doors, windows, rooms and any other items are approximate and no responsibility is taken for any error, omission or mis-statement. This plan is for illustrative purposes only and should be used as such by any prospective purchaser. The services, systems and appliances shown have not been tested and no guarantee as to their operability or efficiency can be given.
Made with Metropix ©2021.



£850 PCM

IMPORTANT NOTE: These particulars and the descriptions and measurements herein do not constitute representation and whilst every effort has been made to ensure accuracy, this cannot be guaranteed.

